

COLLISION REPAIR EDUCATION[™] **FOUNDATION** I-CAR



2020 Report to the Industry

Our vision: A collision industry with a sufficient number of qualified, properly trained, and immediately productive entry-level employees to meet current and future Industry needs.

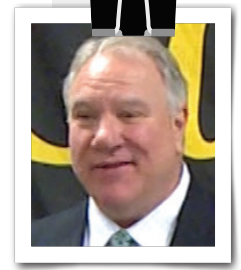
MISSION

Support collision repair educational programs, schools, and students to create qualified, entry-level employees and connect them with an array of career opportunities.



The Education Foundation has been a Four (out of Four) Star charity since 2014.

Executive Summary



I hope and pray that those reading this report are safe and sound, making it through a very difficult period in our history. Year over year, CREF's list of supporters have been our "foundation" so we want to stop and give thanks to those that continue to support our mission. We are proud to be able to celebrate 30 years of supporting collision education programs nationally.

We have distributed over \$300 million in school support since 2009, the year we transitioned to philanthropy. Although 2020 was difficult, we still donated critical support to the schools with both cash and in-kind gifts. The schools struggled to make sense of a predominant hands-on program in a virtual world. With so many stops and start and most schools working virtually, it was difficult to help our students face to face. In a normal year, we facilitate over 20 career fairs. In its place we found a unique platform to help schools with state-of-the-art training, opening their minds to new ideas, aiding instructors with a window into the industry. We lost many of our wonderful volunteers due to restrictions, but we were able to make a difference by shifting our focus to different, but still critical areas. Many major organizations dug in and introduced CREF to their marketing departments. We worked on our five-year plan laying out in detail the steps forward to support the schools and students at higher, more measurable levels.

With the help of the industry we still distributed over \$13.7M in support to the schools. Thanks to a strong stock market and a PPP loan from the Federal Government, our balance sheet remains strong with over \$3.6M in total assets. We are proud to say that we are no longer just distributing checks to schools and their students but holding schools accountable. Our partnership with I-CAR and their 2000 volunteers continues to grow. More students, high-quality participants, and a clear path to employment are all in our sights. Over the last eight years of working with the best staff anyone could ask for, we can look back and know that we have accomplished much. Operating in all 50 states with over 1000 schools; 200 of them receiving our highest level of support, we are making a measurable difference; National problem with a local solution. Thank you all for your continued support and have a safe and prosperous 2021.

Thank you!

Clark Plucinski
Executive Director

Financials

2017 – 2020

2020 DONATIONS

90% COLLISION SCHOOL, STUDENT,
AND INSTRUCTOR SUPPORT

10% ADMINISTRATIVE
COSTS


STATEMENT OF ACTIVITIES*

REVENUE	2017	2018	2019	2020
• Contributions – Unrestricted	\$831,145	\$897,564	\$945,518	\$728,803
• Contributions – Restricted	\$1,108,093	\$1,163,815	\$799,521	\$386,689
• Contributions – In-Kind	\$9,812,182	\$11,778,893	\$12,682,325	\$12,396,367
• Special Events	\$335,711	\$382,960	\$298,791	\$238,945
• Investments	\$145,190	(\$58,052)	\$237,674	\$205,065
• Sales of Technician Shirts	\$5,245	\$6,795	\$4,220	\$660
Total Revenue:	\$12,237,566	\$14,171,975	\$14,968,048	\$13,956,529
EXPENSES	2017	2018	2019	2020
• Grants, Scholarships, Awards*	\$10,703,375	\$12,681,586	\$13,387,170	\$12,684,546
• Payroll, Taxes, etc.	\$698,002	\$781,473	\$768,515	\$468,268
• Rent & Building	\$22,883	\$22,692	\$18,132	\$4,482
• Travel	\$117,579	\$92,513	\$93,371	\$13,119
• Professional Services	\$126,661	\$68,166	\$68,615	\$46,423
• Marketing & Promotion	\$122,789	\$118,462	\$117,935	\$34,071
• Meetings	\$114,999	\$73,846	\$292,257	\$136,365
• Office Operations	\$86,872	\$104,755	\$128,496	\$128,026
• I-CAR Allocation of Expenses	\$35,412	\$23,629	\$34,876	\$20,804
Total Expenses:	\$12,030,093	\$13,967,122	\$14,909,366	\$13,536,104
Change in Net Assets:	\$207,473	\$204,853	\$58,682	\$420,425

* Includes in-kind disbursements equal to the amount of in-kind contributions.

Over \$1,000,000

in Scholarships and Tool Grants Have Been Distributed Since 2009

To assist high school and college collision students, the Collision Repair Education Foundation offers student scholarships and tool grants which helps remove financial barriers during students' technical education.

Spring 2020 scholarship/tool grant poster distributed to schools nationwide.

2020

COLLISION REPAIR STUDENT TOOL GRANTS & SCHOLARSHIPS

**Apply Online by
02.20.20**

**Over \$200,000
in Awards!**

**“Like”
US ON
FACEBOOK**

ELIGIBILITY REQUIREMENTS: All applications must be completed by **Thursday, February 20, 2020**. All applicants must be high school seniors or post-secondary students currently enrolled (at the time of application) in a collision repair program and must have been studying collision repair for at least one semester prior to applying for the awards. Students will be considered for all scholarships tool grants that they are eligible for based on the individual eligibility factors of each award. These eligibility factors can include gender, school attending, year in school, future plans, outside activities, and/or financial need.

The Collision Instructor must complete the Collision Repair School Solutions Survey in order for his/her students to be eligible for any of the scholarship/tool grant opportunities. More details available at:



FREE STUDENT TECH SHIRT & SAFETY GLASSES*

*Limited to the first 250 students that complete a scholarship application.

3M WE SUPPORT HIRE OUR HEROES

AkzoNobel

AMI AUTOMOTIVE MANAGEMENT INSTITUTE

BASF The Chemical Company

CALIBER COLLISION

Chuck Sulkala Scholarship

I-CAR NASHVILLE

TECHFORCE FOUNDATION

COLLISION REPAIR EDUCATION FOUNDATION Board of Trustees Scholarship

CARSTAR

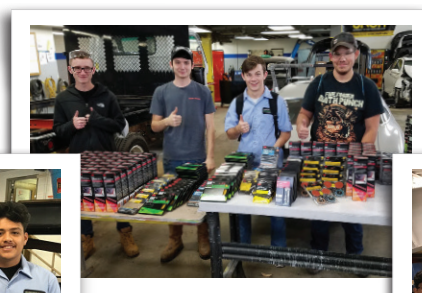
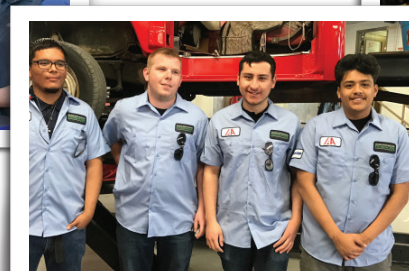
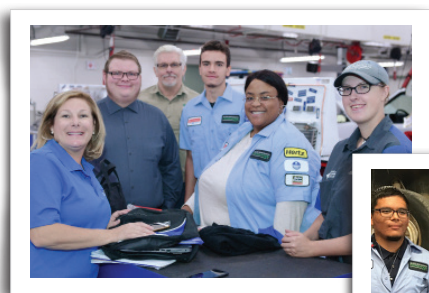
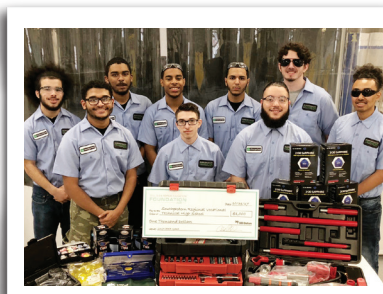
CCC One. True. Partner.

PPG PPG Automotive Refinish Bringing innovation to the surface.™

ServiceKing COLLISION REPAIR CENTERS

Over \$10,000,000

in Support Provided to Schools, Students,
and Instructors in 2020



Over \$150,000,000

in School Grants and Donations Have Been Awarded to Collision School Programs Since 2009

To help ensure that local high school and college collision school programs have the support needed to provide a quality technical education, the Collision Repair Education Foundation secures and distributes both monetary and in-kind product donations to instructors around the country. Collision school instructors around the country are facing limited program budgets and through these tax-deductible donations made through the Education Foundation, together we are working towards students being able to graduate as productive, efficient, and capable entry-level staff for the industry.

➡ If your company would be interested in connecting with one of the 2020 Benchmark applicant schools, please contact info@ed-foundation.org

COLLISION REPAIR EDUCATION™ FOUNDATION <small>I-CAR</small>			
Collision School Career Readiness Benchmark			
SCHOOL REQUIREMENTS	TIER 1 Advanced	TIER 2 Proficient	TIER 3 Developing
Makeover Application	X	X	X
Collision Repair School Solutions Survey	X	X	X
NATEF (or equivalent)	X*	X*	X*
Contact Hours (for the entire program)	720	346	180
Active Advisory Committee	X	X	X
Required Tool List	100%	75%	50%
Curriculum (I-CAR PDP-EE or other that is approved by the state/district)	X**	X	X
Teach At Least 54 Basic Tasks	X	X	
Teach Soft Skills	X	X	
Teach Safety Program	X	X	X
Teach Estimating Program	X	X	
Instructor Continuing Education Hours (per year)	20	10	10
Established Internship/Apprenticeship Program	X		
SkillsUSA Participation/Service Learning Projects/Community Projects	X		
<small>* If not NATEF, must meet similar requirements. ** This is to include the capability of the student to be ProLevel 1 in either Painting/Refinishing or Non-Structural.</small>			
info@ed-foundation.org CollisionEducationFoundation.org			
122115			

Join us in **Recognizing** our 2020 Benchmark Applicant Schools!

ALABAMA

Earnest Pruett Center of Technology
Hollywood, Alabama

ARIZONA

West-MEC
Phoenix, Arizona

Gateway Community College
Central City Campus
Phoenix, Arizona

East Valley Institute of Technology
Mesa, Arizona

ARKANSAS

Northeast Arkansas Career
and Technical Center
Jonesboro, Arkansas

CALIFORNIA

Dos Palos High School
Dos Palos, California

Eden Area ROP
Hayward, California

Contra Costa College
San Pablo, California

COLORADO

Warren Tech
Lakewood, Colorado

Aims Community College
Automotive Programs
Windsor, Colorado

Morgan Community College
Ft. Morgan, Colorado

DELAWARE

Hodgson Vo-Tech
Newark, Delaware

Sussex Technical High School
Georgetown, Delaware

FLORIDA

Middleburg High School
Middleburg, Florida

George Stone Technical College
Pensacola, Florida

Lake Technical College
Eustis, Florida

Seminole High School
Sanford, Florida

Sheridan Technical College
Hollywood, Florida

Hillsborough Community College
Tampa, Florida

Lorenzo Walker Technical College
Naples, Florida

Martin County High School
Stuart, Florida

GEORGIA

Maxwell High School of Technology
Lawrenceville, Georgia

Chattahoochee Technical College
Jasper, Georgia

Paulding County High School
Dallas, Georgia

Etowah High School
Woodstock, Georgia

North Georgia Technical College
Clarkesville, Georgia

Athens Technical College
Athens, Georgia

HAWAII

Honolulu Community College
Honolulu, Hawaii

IDAHO

Lewis-Clark State College
Lewiston, Idaho

Dennis Technical Education Center
Boise, Idaho

North Idaho College
Coeur d'Alene, Idaho

Kootenai Technical Education Campus
Rathdrum, Idaho

ILLINOIS

Marengo Comm HS Dist 1554
Marengo, Illinois

Kennedy King College
Chicago, Illinois

INDIANA

Area30 Career Center
Greencastle, Indiana

Walker Career Center
Indianapolis, Indiana

Impact Institute
Kendallville, Indiana

Ivy Tech Community College,
Fort Wayne
Fort Wayne, Indiana

IOWA

Des Moines Area Community
College (DMACC)
Ankeny, Iowa

Hawkeye Community College
Waterloo, Iowa

KANSAS

Wichita Public Schools
Wichita, Kansas

KENTUCKY

Eastside Technical Center
Lexington, Kentucky

Big Sandy Community and
Technical College
Prestonsburg, Kentucky

LOUISIANA

Walker High School
Walker, Louisiana

MAINE

Oxford Hills Technical School/ Maine
Vocational Region 11
Norway, Maine

MARYLAND

Gaithersburg High School
Gaithersburg, Maryland

Carroll County Career and
Technology Center
Westminster, Maryland

MASSACHUSETTS

Pathfinder Regional Vocational
Technical High School
Palmer, Massachusetts

Montachusett Regional Vocational
Technical High School
Littleton, Massachusetts

Bay Path
Charlton, Massachusetts

Assabet Valley Regional Technical H.S
Marlboro, Massachusetts

Greater Lowell Technical High School
Tyngsboro, Massachusetts

Southeastern Regional Vocational
Technical High School
South Easton, Massachusetts

MICHIGAN

Kent Career Technical Center
Grand Rapids, Michigan

MINNESOTA

Hennepin technical college
Eden Prairie, Minnesota

Minnesota State Technical
College Southeast
Winona, Minnesota

South Central College
North Mankato, Minnesota

MISSOURI

North Technical High School
Florissant, Missouri

South Technical High School
Sunset Hills, Missouri

Lewis and Clark Career Center
St Charles, Missouri

Lex La-Ray Technical Center
Lexington, Missouri

Lake Career & Technical Center
Camdenton, Missouri

State Technical College of Missouri
Linn, Missouri

Nichols Career Center
Jefferson City, Missouri

Gibson Technical Center
Reeds Spring, Missouri

MONTANA

Montana State University
Billings City College
Billings, Montana

NEBRASKA

Metropolitan Community College
Omaha, Nebraska

Southeast Community College
Milford, Nebraska

Continued on page 8

Join us in **Recognizing** our 2020 Benchmark Applicant Schools! *(continued)*

Continued from page 7

NEW YORK

Hunterdon County Vocational School District
Flemington, New Jersey

New York Automotive & Diesel Institute
Jamaica, New York

Ulster BOCES
Port Ewen, New York

Cayuga-Onondaga BOCES
Auburn, New York

Morrisville State College
Morrisville, New York

Madison Oneida BOCES
Verona, New York

W.D.Ormsby Educational Center
East Aurora, New York

Erie Community College South
Orchard Park, New York

Cattaraugus Allegany Boces Center at Ellicottville
Ellicottville, New York

CA BOCES-CTE Center @ Olean
Olean, New York

GST BOCES Coopers Education Center
Painted Post, New York

GST BOCES Bush Education Center
Elmira, New York

NORTH CAROLINA

Stanly Community College
ALBEMARLE, North Carolina

Fayetteville Technical Community College
Fayetteville, North Carolina

Westover High School
Fayetteville, North Carolina

Sandhills Community College
Pinehurst, North Carolina

Eastern North Carolina Regional Skills Center
Jacksonville, North Carolina

Iredell-Statesville Career Academy & Technical School
Troutman, North Carolina

NORTH DAKOTA

North Dakota State College of Science
Wahpeton, North Dakota

OHIO

Ft. Hayes Career Center
Columbus, Ohio

Four Copunty Career Center
ARCHBOLD, Ohio

Waite High School
Toledo, Ohio

EHOVE Career Center
Milan, Ohio

Miami Valley Career Center
Englewood, Ohio

OKLAHOMA

Mid-Del Technology Center
Midwest City, Oklahoma

Tulsa Technology Center Broken Arrow Campus
Broken Arrow, Oklahoma

PENNSYLVANIA

Steel Center
Clairton, Pennsylvania

Beaver County Career & Technology Center
Monaca, Pennsylvania

Forbes Road CTC
Monroeville, Pennsylvania

Rosedale Technical College
Pittsburgh, Pennsylvania

Jeff Tech
Reynoldsville, Pennsylvania

Lebanon County Career and Technology Center
Lebanon, Pennsylvania

Thaddeus Stevens College of Technology
Lancaster, Pennsylvania

Pennsylvania College of Technology
Williamsport, Pennsylvania

Susquehanna County Career Technology Center
Springville, Pennsylvania

Eastern Center for Arts and Technology
Willow Grove, Pennsylvania

Thomas A Edison High School
Philadelphia, Pennsylvania

Technical College High School
Pennocks Bridge CCIU
West Grove, Pennsylvania

Central Montco Technical High School
Plymouth Meeting, Pennsylvania

Berks Career and Technology Center
Oley, Pennsylvania

Reading-Muhlenburg Career and Technology Center
Reading, Pennsylvania

SOUTH CAROLINA

Woolard Technology Center
Camden, South Carolina

Union County Career and Technology Center
Union, South Carolina

TENNESSEE

Lincoln College
Antioch, Tennessee

Northwest High School
Clarksville, Tennessee

Greene Technology Center
Greenville, Tennessee

Tennessee College of Applied Technology
Morristown, Tennessee

Tennessee College of Applied Technology at Paris
Paris, Tennessee

TEXAS

Collin College
Allen, Texas

Duncanville High School
Duncanville, Texas

Skyline High School
Dallas, Texas

Tarrant County College
Fort Worth, Texas

Kingwood Park High School
Kingwood, Texas

JB Hensler College and Career Academy (aka Alvin ISD)
Manvel, Texas

Judson High School
Converse, Texas

Texas Southmost College
Brownsville, Texas

Texas State Technical College
Harlingen, Texas

South Plains College
Levelland, Texas

UTAH

UAW-LETC
Clearfield, Utah

Bridgerland Technical College
Logan, Utah

Ogden High School
Ogden, Utah

VIRGINIA

Monroe Advanced Technical Academy "MATA" @ the Academies of Loudoun
Leesburg, Virginia

Fauquier High School
Warrenton, Virginia

Northern Neck Technical Center
Warsaw, Virginia

Dowell J Howard Center
Winchester, Virginia

CATEC
Charlottesville, Virginia

Tidewater Community College
Chesapeake, Virginia

WASHINGTON

Wenatchee Valley Tech
Wenatchee, Washington

WEST VIRGINIA

Mercer County Technical Education Center
Princeton, West Virginia

Tucker County High School Career Center
Hambleton, West Virginia

United Technical Center
Clarksburg, West Virginia

WISCONSIN

Germantown High School
Germantown, Wisconsin

Southwest Tech
Fennimore, Wisconsin

Freedom High School
Freedom, Wisconsin

Chippewa Valley Technical College
Eau Claire, Wisconsin

Fox Valley Technical College
Appleton, Wisconsin

WYOMING

Laramie County Community College
Cheyenne, Wyoming

WyoTech
Laramie, Wyoming

Five Million Dollar+ Lifetime Donors



Million Dollar+ Lifetime Donors



2020 Industry Leadership Circle Monetary Donors

\$100,000 – \$499,999



\$50,000 – \$99,999



\$25,000 – \$49,999

- CCC Information Services
- LKQ
- Driven Brands

- Farmers Insurance
- Insurance Auto Auctions
- Liberty Mutual Insurance

- PPG
- Solera

2020 Collision Repair Education Foundation

BOARD OF TRUSTEES**CHAIR**

Tom Wolf*
PPG Industries, Inc.

VICE CHAIR

Don Mikrut*

TREASURER

Ryan West*
GEICO

SECRETARY

Kyle Holt*
S/P2

TRUSTEES-AT-LARGE

Kevin Burnett*
Gerber Collision & Glass

Steve Schmidt*
State Farm

IMMEDIATE PAST CHAIR

Stacy Bartnik*
Intertek

Jeanne Silver*
CARSTAR Mundelein

TRUSTEES

Jeanne Silver*
CARSTAR Mundelein

Tom Brown
3M

Mike Croker
Chief Automotive

Paul Folino
LKQ Corporation

Ty Gammill
Caliber Collision Centers

Mark Helvenston
Insurance Auto Auctions (IAA)

Brenda Hogen
Parts Trader

Ken Hudson
Farmers Insurance

Sean Huurman
Service King Collision Repairs Centers

Doug Irish
Fayetteville Technical Community

Scott Kohl
Liberty Mutual Insurance

Sandee Lindorfer
Allstate Insurance Co

Mary Mahoney
Enterprise Holdings, Inc.

Mary Jo Prigge
CCC Information Services

Casey Rodriguez
Hertz Corporation

Jay Sharp
National Coatings & Supplies

James Spears
Tractable

CHAIRMAN EMERITUS

Stacy Bartnik
Intertek

Terry Fortner

TRUSTEE EMERITUS

J. Laurence “Larry” Costin
CCC Information Services, Inc.

Lirel G. Holt
U, Inc.

Charles S. Sulkala