

PARTNERSHIP OPPORTUNITIES

COLLISION REPAIR EDUCATION
FOUNDATION
I-CAR

888.722.3787

info@ed-foundation.org



collisioneducationfoundation.org



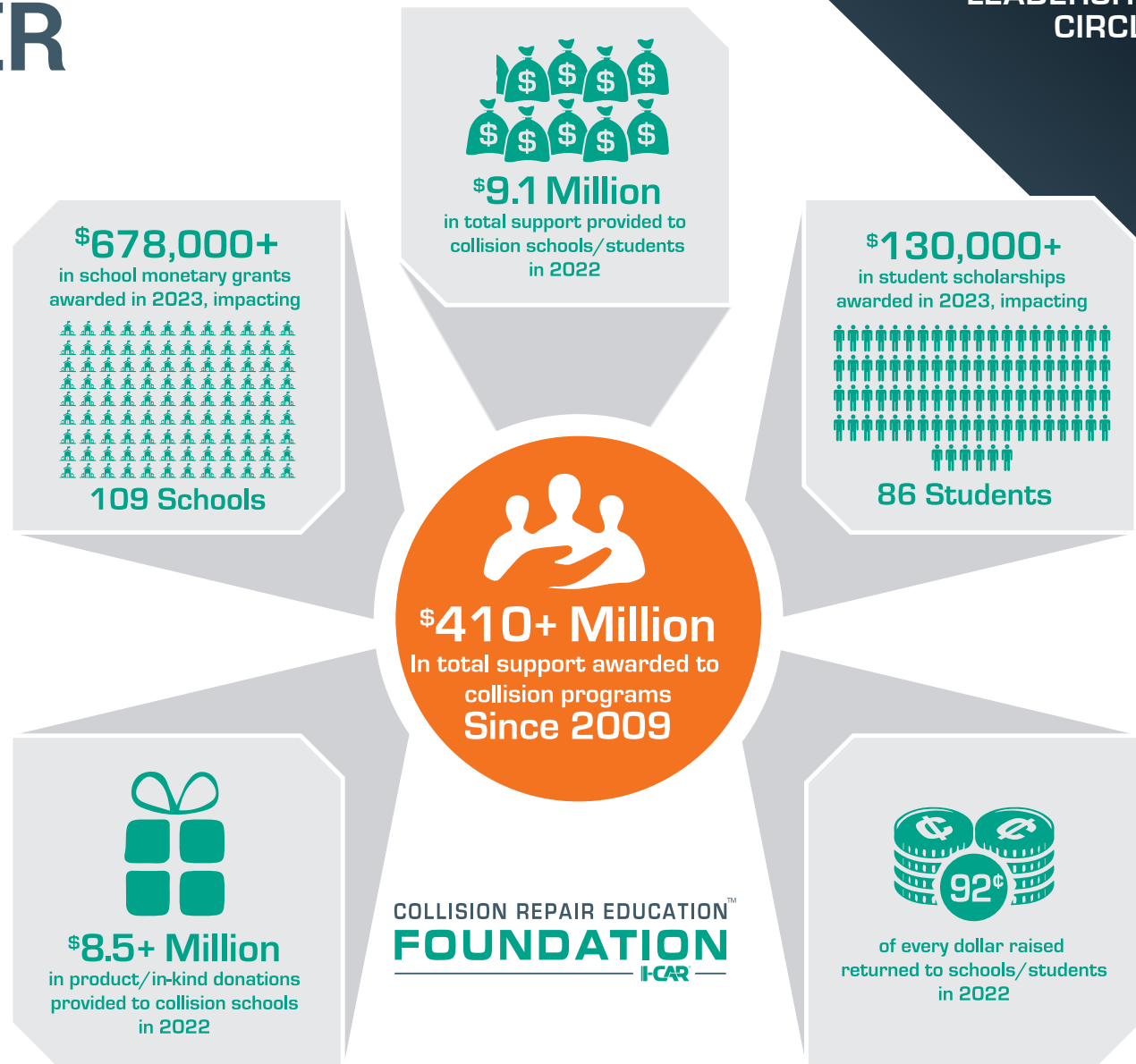
ASK HOW
to be part of the
**LEADERSHIP
CIRCLE**

WHY PARTNER WITH CREF

**An unparalleled leader in
the collision repair industry,
impacting results and driving
positive change since 2009.**

The **Collision Repair Education Foundation (CREF)** works with local schools and communities across industry segments, building awareness of the many collision industry career opportunities that are available at any given time. CREF also gives direct support to students through scholarships, school grants & sustainability programs.

With a rich history, extensive presence, and a proven track record of impactful results, CREF stands out as the premier organization for servicing the collision repair industry. Through its long-standing commitment and expertise, CREF has consistently demonstrated its ability to drive positive change, directly support collision repair students and provide invaluable resources to ensure the industry's growth and success.



INDUSTRY LEADERSHIP CIRCLE IMPACT

CREF PARTNERSHIP OPPORTUNITIES

Last Updated:

888.722.3787

info@ed-foundation.org

collisioneducationfoundation.org

HOW CREF IMPACTS THE INDUSTRY

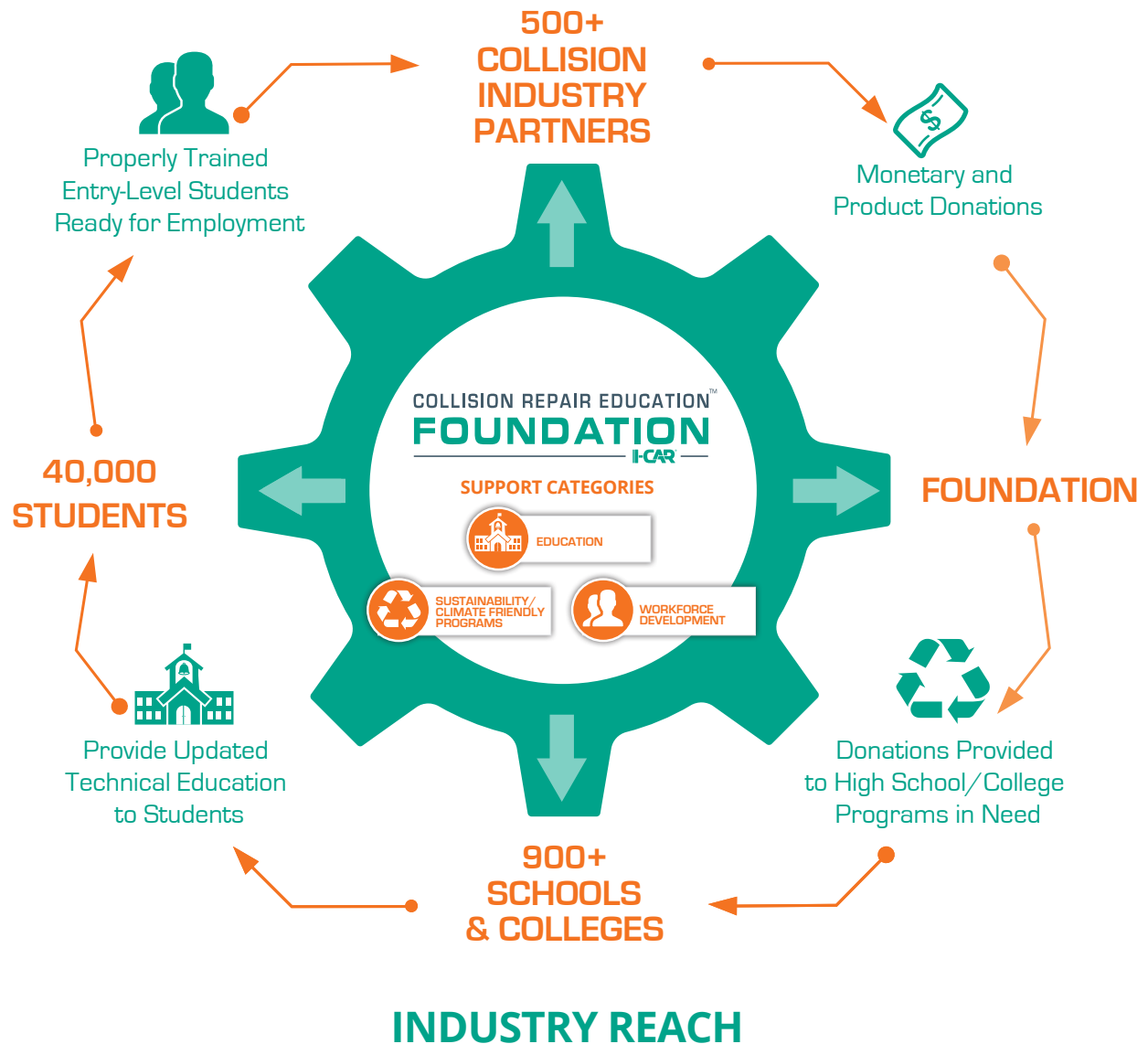
“Keeping our collision repair program up to date and supplied with new equipment is vital to our students (incoming students as well as our current students), our curriculum, and our advisory board.”

— Scott Moore- Instructor
Dennis Technical Education Center
2022 Grant Recipient

The Collision Repair Education Foundation (CREF) plays an important role in connecting the industry to schools through a focus on education, workforce development and sustainability, leading to entry-level students ready to immediately make an impact in the industry.

Through the generous support of industry partners, CREF is able to provide both financial and product support to schools. This valuable support allows instructors to focus on the most important thing- the student.

Additionally, CREF directly supports students through scholarships and tool grants. Scholarships and tools set students up with the financial resources needed to start a successful career in this industry.

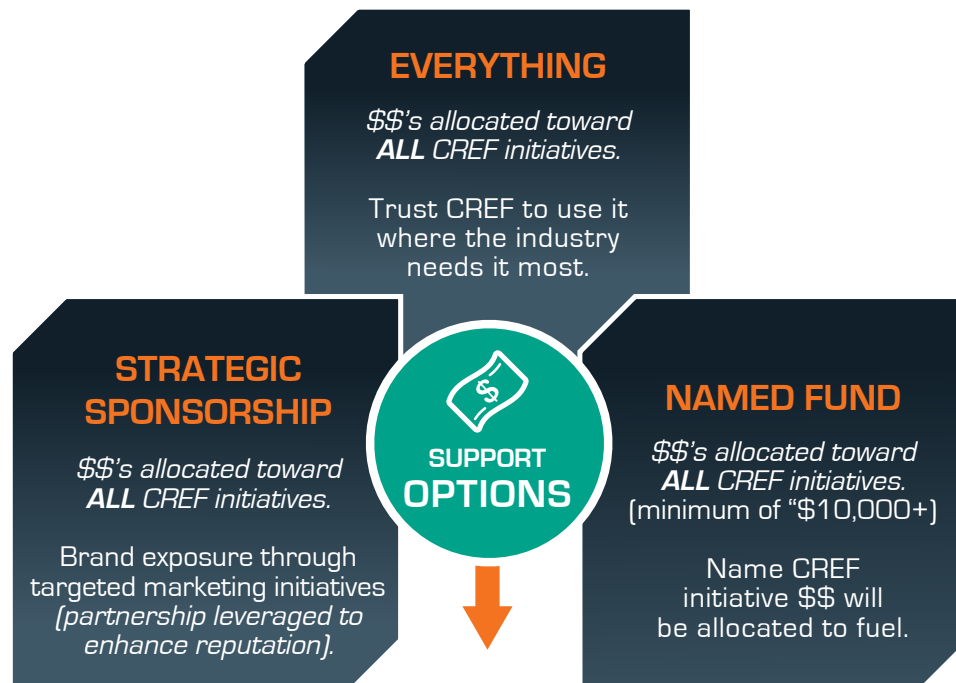


CREF PARTNERSHIP OPPORTUNITIES

Last Updated:

ASK HOW
to customize
a plan to
LEVEL UP

WAYS TO SUPPORT CREF



SUPPORT CATEGORIES



EDUCATION

Support talent pipeline initiatives and school improvement projects at the local level for both current students and aspiring individuals entering collision programs.



SUSTAINABILITY/ CLIMATE FRIENDLY PROGRAMS

In-kind or Cash make a tangible difference by supporting initiatives such as our car donation program or providing essential tools and safety gear to schools.



WORKFORCE DEVELOPMENT

Career Fairs create professional development opportunities for instructors, and foster the growth of essential soft and career readiness skills for our students.

Support categories committed to Corporate Social Responsibility and Community Involvement

INDUSTRY LEADERSHIP CIRCLE

SUPPORT OF
\$10,000+
ARE RECOGNIZED

DIAMOND

\$1,000,000+

PLATINUM

\$500,000-\$999,999

GOLD

\$100,000-\$499,999

SILVER

\$50,000-\$99,999

BRONZE

\$25,000-\$49,999

SAPPHIRE

\$10,000-\$24,999

COLLISION REPAIR EDUCATION™
FOUNDATION
I-CAR

CREF PARTNERSHIP OPPORTUNITIES

Last Updated:

888.722.3787

info@ed-foundation.org

collisioneducationfoundation.org

SPONSORSHIP PACKAGES

Support ALL CREF Initiatives

ASK HOW
to combine packages
with fully tax deductible,
named fund gifts
supporting CREF's
impact initiatives

SPONSORSHIP	A PACKAGE \$10,000	B PACKAGE \$15,000	C PACKAGE \$25,000	D PACKAGE \$50,000
Website Recognition - Industry Leadership Circle (1 Year)	Listed	Listed	Enhanced Presence	Enhanced Presence
eNews Recognition - Industry Leadership Circle (1 Year)	Listed	Listed	Enhanced Presence	Enhanced Presence
Annual Report Recognition	Listed	Listed	Enhanced Presence	Enhanced Presence
Social Media Post	+	+	+	+
Company Assets Distributed to 900+ Schools			+	+
CREF Career Fairs	15% Discount L Package	15% Discount L Package*	M Package at 2 Career Fairs*	M Package at 4 Career Fairs*
CREF Annual Golf Fundraiser	10% Discount on Golf Reg.	15% Discount on Golf Reg.	I Package Golf Sponsorship (Includes 2 Golf Reg.)	J Package Golf Sponsorship* (Includes 4 Golf Reg.)

IN-KIND BENEFITS	E PACKAGE \$10,000	F PACKAGE \$15,000	G PACKAGE \$25,000	H PACKAGE \$50,000
Website Recognition - Industry Leadership Circle (1 Year)	Listed	Listed	Enhanced Presence	Enhanced Presence
eNews Recognition - Industry Leadership Circle (1 Year)	Listed	Listed	Enhanced Presence	Enhanced Presence
Annual Report Recognition	Listed	Listed	Enhanced Presence	Enhanced Presence
Social Media Post	+	+	+	+
Company Assets Distributed to 900+ Schools	+	+	+	+

*Individual Golf & Career Fair sponsorships details available upon request.
Limited availability. First come, first served.

COLLISION REPAIR EDUCATION™
FOUNDATION
I-CAR

CREF PARTNERSHIP OPPORTUNITIES

Last Updated:

888.722.3787

info@ed-foundation.org

collisioneducationfoundation.org



2024 SPONSORSHIP PACKAGES

COLLISION REPAIR EDUCATION[™]
FOUNDATION
I-CAR

☎ 888.722.3787

✉ info@ed-foundation.org

🌐 collisioneducationfoundation.org

22nd Annual Golf Fundraiser

COLLISION REPAIR EDUCATION
FOUNDATION
— I-CAR —

ARROWHEAD GOLF CLUB
Littleton, CO • July 9, 2024



GOLF PACKAGES

Supports ALL CREF Initiatives

PACKAGE SPONSORSHIP	I PACKAGE \$4,000	J PACKAGE \$6,000
Events Page Recognition	+	+
eNews Shout Out	+	+
On-Site Recognition	+	+
Registration Table	+	+
Golfer Bag Promo Item (Item Provided By Sponsor)		+
# of Golfers *	2	4
Sponsor Options	Choose One: <ul style="list-style-type: none"> • Shipping • Cooling Towel • Bottled Water • Poker Chip Ball Marker • Golf Ball Drop • \$10k Hole-in-One • Closest to the Pin • Long Drive • Beverage Can Koozie • Logo on Golf Ball <p><i>Note: Crossed Out Items Are Sold Out</i></p>	Choose One: <ul style="list-style-type: none"> • Exclusive Green • Golf Towel • Cooling Towel • Beverage Can Koozie • Hat • Shoe Bag • Photography • Golf Cart • Beverage Cart • Divot Tool • Lunch • Dinner • \$50k Hole-in-One

SINGLE ITEM SPONSORSHIP

\$500 TEE BOX SPONSOR *

\$15 BALL DROP *

***ADDITIONAL GOLFER REGISTRATION:**

\$400 Per Golfer or \$1,600 for Foursome

CREF PARTNERSHIP OPPORTUNITIES

Last Updated:

888.722.3787

info@ed-foundation.org

collisioneducationfoundation.org

CAREER FAIR PACKAGES



FEATURES	K PACKAGE * \$500	L PACKAGE \$1,000	M PACKAGE \$2,500	N PACKAGE \$5,000
Exhibit Table	+	+	+	1 st Choice Table Placement
Student Resume Database Access		+	+	+
Company Logo on Student Tech Shirts <small>(Must be secured 5 weeks prior to event)</small>			+	+
Company Logo on Student Tech Shirts & Event Marketing <small>(Must be secured 5 weeks prior to event)</small>				+

*K Package for Chicago, & Oklahoma Career Fair Events not available.

Career Fairs connect students with employers and offer many benefits including hiring, brand awareness, industry awareness and the valuable confidence the experience can give to students. All Career Fairs are for collision, automotive service and diesel students.

COLLISION REPAIR EDUCATION™
FOUNDATION
I-CAR

CREF PARTNERSHIP OPPORTUNITIES

Last Updated:



888.722.3787



info@ed-foundation.org



collisioneducationfoundation.org

BEFORE

UNIFORM PACKAGE

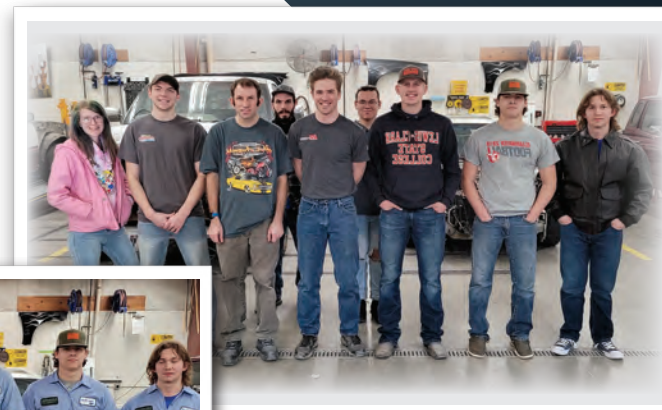
Why Professional Uniforms?

Technicians wear uniforms for several different reasons including safety, team unity and professionalism. Uniforms have also proven to improve attendance, as well as foster school unity, self-esteem and motivation as students embark on their career path. All these factors lead to higher retention and graduation rates and job placement. An additional benefit of the program is the opportunity for businesses to connect with the future professionals in the industry!

How the Uniform Program Works

1. Select the number of students and the local collision school to support *(CREF can assist with finding a local program if needed)* and CREF will fulfill the order.
2. Your team visits the school to distribute the uniforms and engage with students.

AFTER



PACKAGE OPTIONS

PRICE PER STUDENT

Full Uniform - Shirt/Pants
(Company Logo on Student Tech Shirts)

\$80

Shirt Only
(Company Logo on Student Tech Shirts)

\$40

COLLISION REPAIR EDUCATIONTM
FOUNDATION
I-CAR

CREF PARTNERSHIP OPPORTUNITIES

Last Updated:

888.722.3787

info@ed-foundation.org

collisioneducationfoundation.org

ASK HOW
to become a
CREF PARTNER!

CREF PARTNERSHIP DEVELOPMENT

“Never underestimate the valuable and important difference you make in every life you touch. For the impact you make today has a powerful rippling effect on every tomorrow.”

— Anonymous

The **Collision Repair Education Foundation (CREF)** is committed to making a significant impact on the future of the collision industry. We are proud to serve as the liaison between our generous partners in the collision industry, the students who represent the next generation of highly skilled collision technicians, and the schools and programs that educate them.

We encourage our industry colleagues – collision repair shops, insurers, materials and equipment suppliers, service and information providers, vehicle manufacturers, related businesses, ICAR Committees, local business groups, and trade associations – to invest in our shared future. Your generosity will benefit not only today’s and tomorrow’s students, but also the businesses – both local and nationwide – that depend upon collision industry schools to produce high caliber entry-level employees.

As we face the challenges of a critical shortage in qualified entry-level collision technicians, there’s never been a better time to get involved!



Brandon Eckenrode, *Executive Director*
brandon.eckenrode@ed-foundation.org



Amber Ritter, *Director of Marketing & Project Management*
amber.ritter@ed-foundation.org

MAKE AN IMPACT – GET INVOLVED



**Partners/
Sponsorships**



Volunteer



**Internships/
Apprenticeships**



In-Kind
[Time/Talent and/or
Materials/Products]

**COLLISION REPAIR EDUCATION™
FOUNDATION**
— ICAR —

CREF PARTNERSHIP OPPORTUNITIES

Last Updated: